

Our totally planned community offers luxurious and relaxed modern, waterfront living. Framed against glowing Gulf sunsets, WINDRUSH BAY is located in the quaint surroundings of Tarpon Springs away from the congestion of busy city life. This unique community provides modern convenience, shopping, and a fine variety of attractions, restaurants, golf, state parks, beaches, schools, and churches. Enjoy Gulf, bayou and lake fishing the year 'round.

WINDRUSH BAY is conveniently located on Florida Avenue between Sunset Beach and Fred Howard Park - a meticulously maintained county facility, providing opportunities for picnicking, fishing, boating, and swimming. Alternate 19, U.S. 19 and the main streets of Tarpon Springs are close by and provide easy access to the Tampa International Airport, Clearwater and the fabulous Countryside Mall.

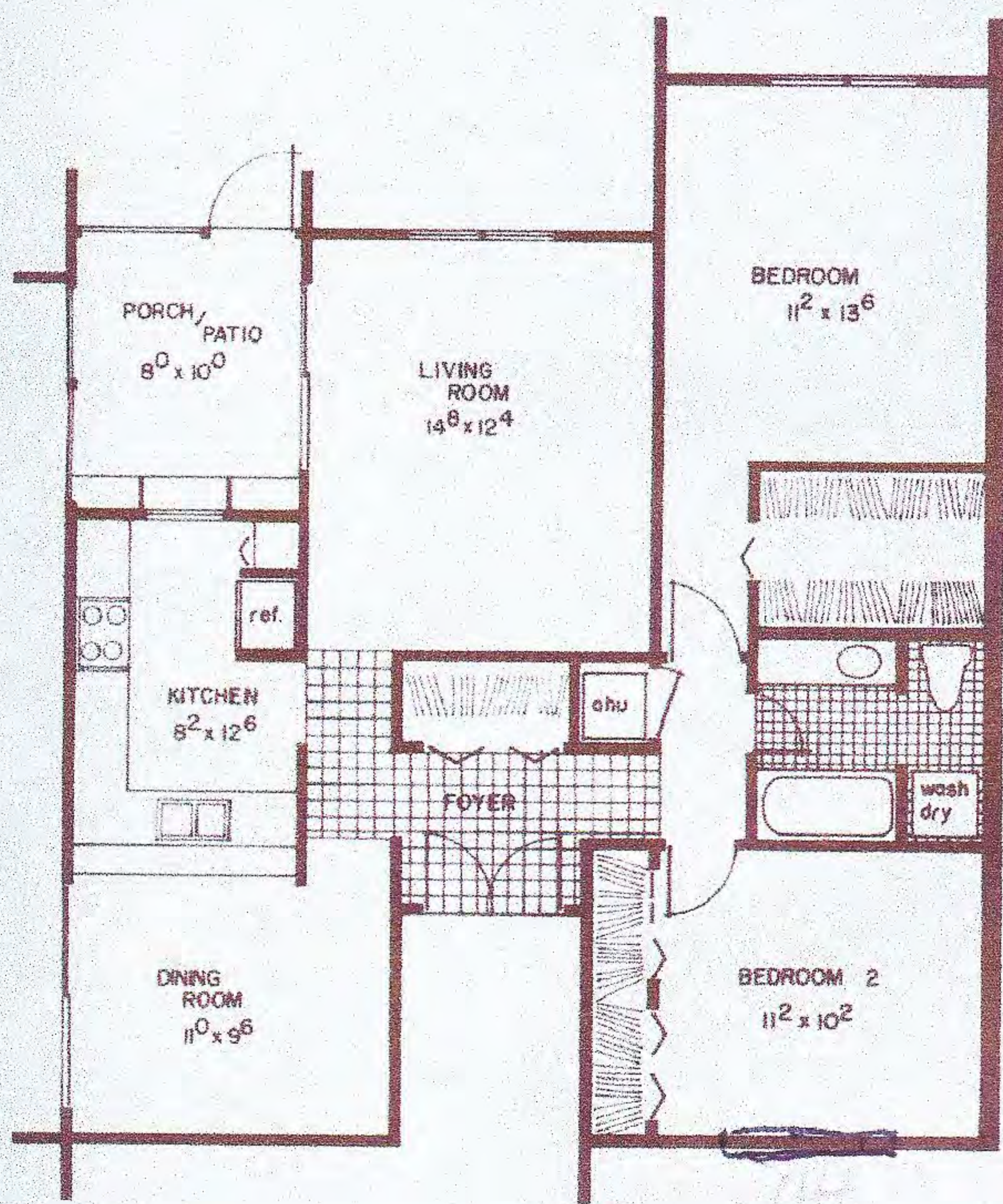
Enjoy our swimming pool, sauna and exercise rooms, recreation center, and especially WINDRUSH BAY'S private peninsula in the Gulf. Select your condominium from five floor plans available, designed to accommodate the most discriminating taste. Let the soft rush of Gulf breezes beckon you. Visit WINDRUSH BAY today and let us show you Florida-living at its finest.



*True Color*

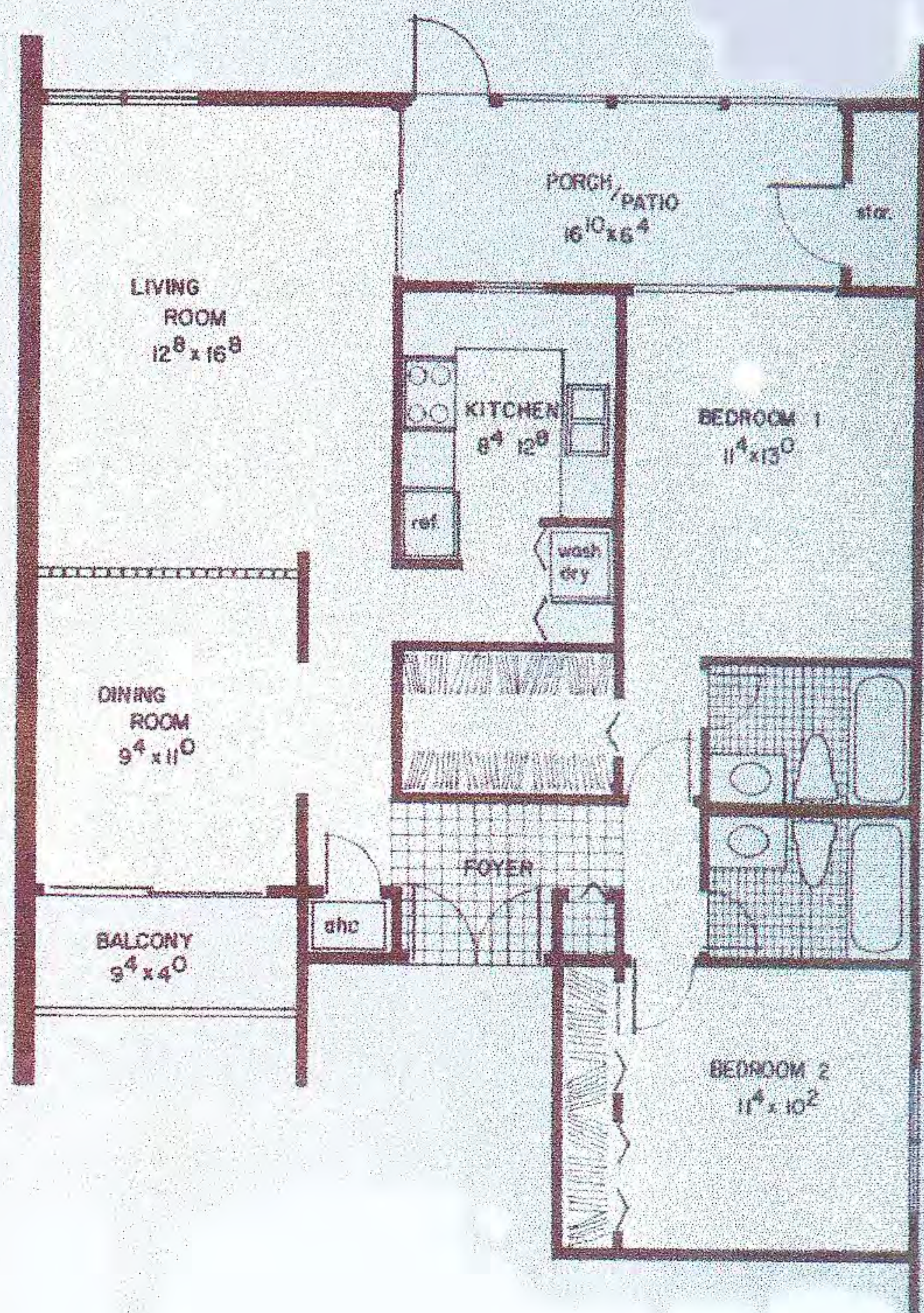
## TWO BEDROOM, ONE BATH

The recessed double-door entry of this unit is enhanced by the large foyer. A large kitchen and formal dining room as well as a spacious porch or patio makes this one of the most popular floor plans.



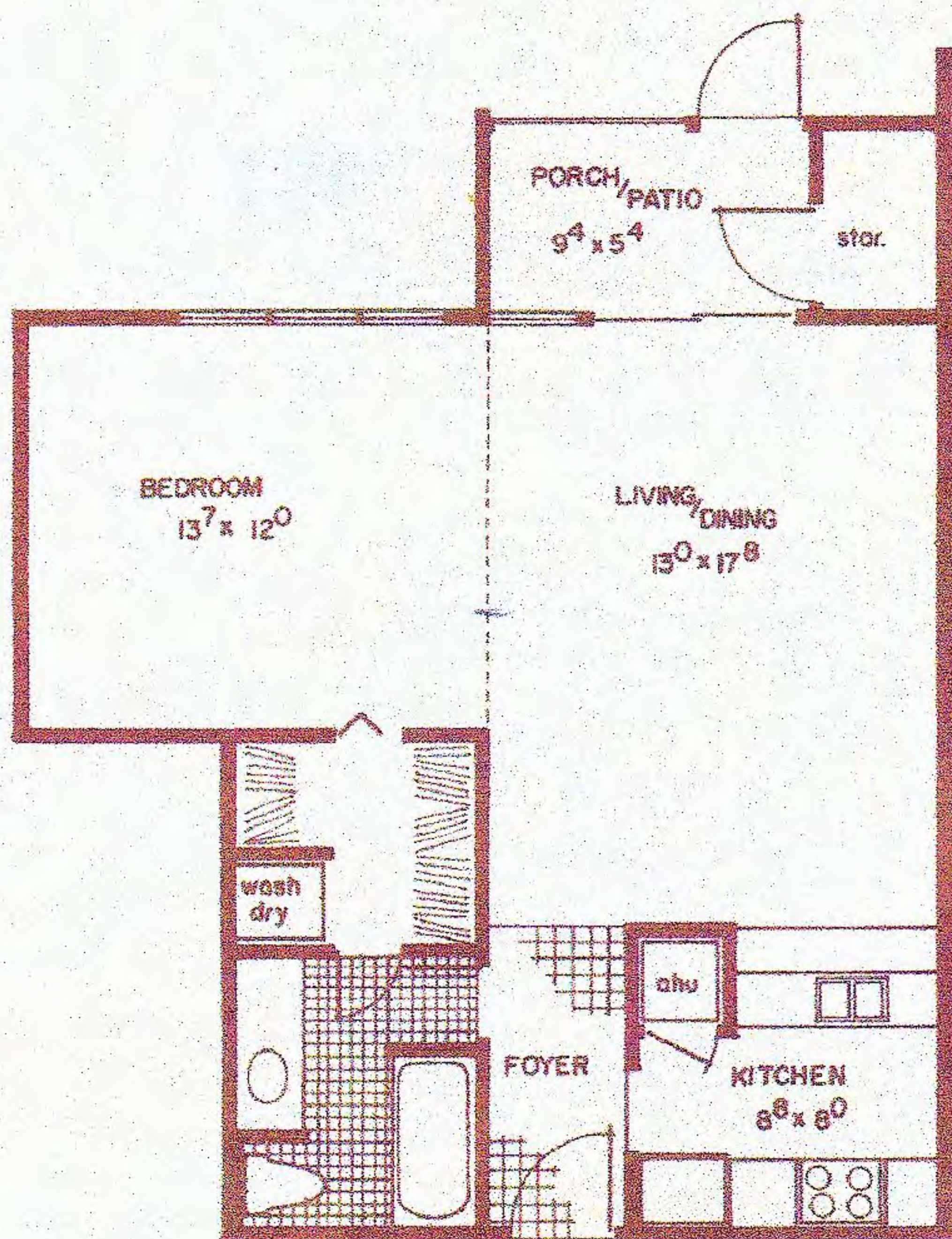
## TWO BEDROOM, TWO BATH

A more luxurious design, the double-door entry leads to a beautiful foyer and large walk-in closet. This model features, in addition to a balcony and rear porch or patio, a storage room. Both bedrooms are adjacent to separate baths for convenience and efficient design.



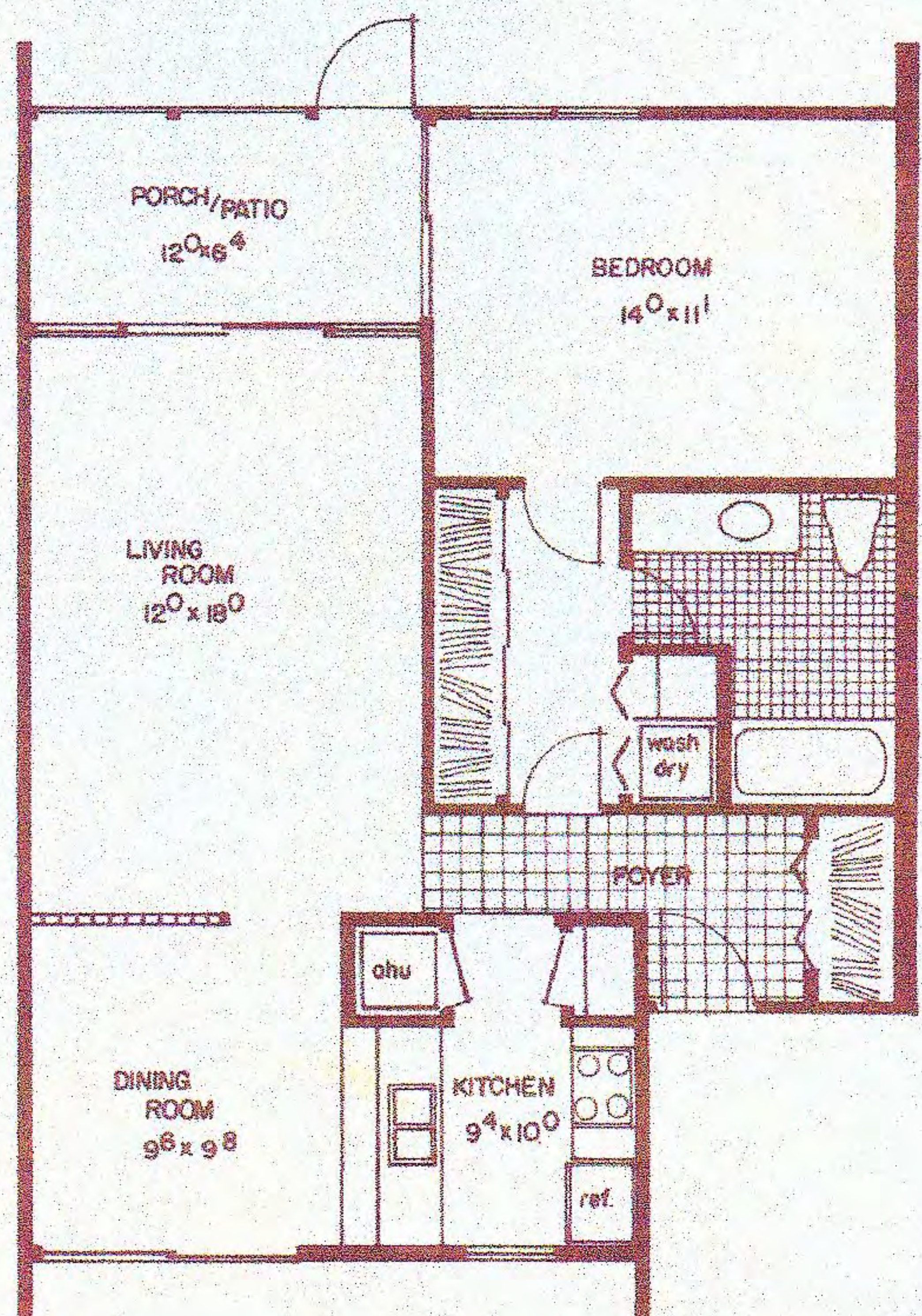
## ONE BEDROOM, ONE BATH EFFICIENCY

This convenient, spacious and comfortable design is truly efficient. The foyer entrance leads to a large living area which is separate from the bedroom area. A storage room and porch or patio are included.



## ONE BEDROOM, ONE BATH

The expanded one bedroom design features a larger foyer, bath, closet, and has a formal dining room.



All dimensions are approximate. Oral representations cannot be relied upon as correctly stating representations of the developer. For correct representations make reference to this brochure and to the documents required by Section 718.503, Florida Statutes, to be furnished by a developer to a buyer or lessee.

# THREE BEDROOM, TWO BATH

This split design is an open and elegant unit. Every feature in it emphasizes Florida-living at its gracious best. A most luxurious unit by any measure.

